

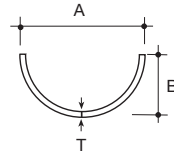



Terrain Crescent System

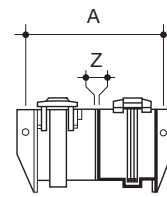
Crescent Rainwater Systems - 110mm


Crescent 

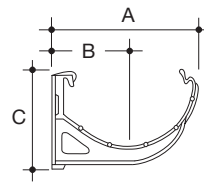
Size (mm)	A	B	T	Colour	Code
CRESCENT GUTTER - True half round profile for maximum capacity Standard gutter length 4m					
 110	110	55	2.2	W R B G	 2150.4.40




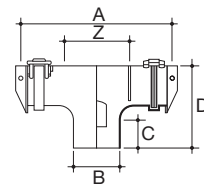
Size (mm)	A	Z	Colour	Code
JOINT BRACKET - For joining gutter lengths				
110	117	1.5	W R B G	 2151.4






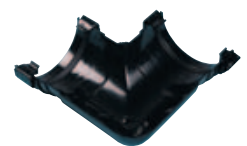
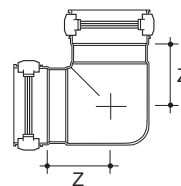
Size (mm)	A	B	C	Colour	Code
SUPPORTING BRACKET - For supporting gutter lengths, angles and stop-end outlets					
110	126	66	83	W R B G	 2152.4



Size (mm)	A	B	C	D	Z	Colour	Code
RUNNING OUTLET - For connecting gutter run to downpipe							
110	214	68	35	117	95	W R B G	 2153.4.25



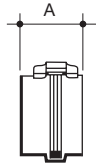
Size (mm)	Angle	Z	Colour	Code
GUTTER ANGLE - To change gutter run direction: 90°, 120° and 135° as standard				
110	90	88	W R B G	 2154.4.90
110	120	60	W R B G	 2154.4.120
110	135	54	W R B G	 2154.4.135
110	156	96	W R B G	2154.4.156



Terrain Crescent System

Crescent Rainwater Systems - 110mm

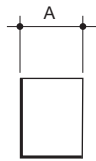
Crescent 



Size (mm)	A	Colour	Code
-----------	---	--------	------

SHORT STOP-END - To cap open gutter end

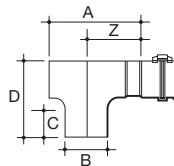
110	43	W R B G 	2155.4
-----	----	---	--------



Size (mm)	A	Colour	Code
-----------	---	--------	------

INTERNAL STOP-END - To cap open gutter end

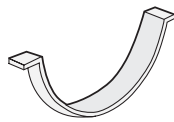
110	33	B 	2156.4
-----	----	---	--------



Size (mm)	A	B	C	D	Z	Colour	Code
-----------	---	---	---	---	---	--------	------

STOP END OUTLET - To cap open gutter and connect gutter run to downpipe.

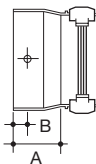
110	145	68	35	117	84	W R B G 	2157.4.25
-----	-----	----	----	-----	----	---	-----------



Size (mm)	Colour	Code
-----------	--------	------

ADAPTOR TO OTHER PVC-U GUTTERS - 2100 adaptor to all round rainwater systems

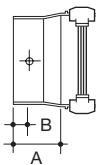
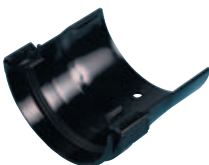
110	Self coloured	2167
-----	---------------	------



Size (mm)	A	B	Colour	Code
-----------	---	---	--------	------


CRESCENT TO 4 1/2" CAST IRON SPIGOT - Socket adaptor to receive spigot end of half-round cast iron gutter

110	57	22	B G 	2158.4.45
-----	----	----	---	-----------




Size (mm)	A	B	Colour	Code
-----------	---	---	--------	------

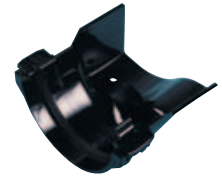
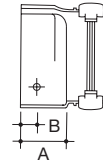
CRESCENT TO 4 1/2" CAST IRON SOCKET - Spigot-end adaptor for linking into socket-end of half-round cast iron gutter


110	57	19	B G 	2159.4.45
-----	----	----	---	-----------

Crescent Rainwater Systems - 110mm

Crescent 

Size (mm)	A	B	Colour	Code
CRESCENT TO 4½" OGEE CAST IRON SPIGOT - Socket adaptor to receive spigot end of ogee cast iron gutter				
110	62	22	W R G B 	2168.4.45



Size (mm)	A	B	Colour	Code
CRESCENT TO 4½" OGEE CAST IRON SOCKET - Spigot-end adaptor for linking into socket-end of ogee cast iron gutter				
110	62	22	B 	2169.4.45

