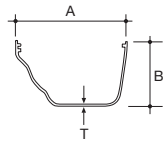
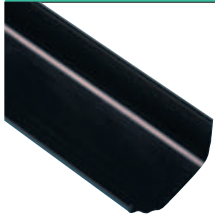


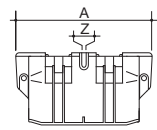
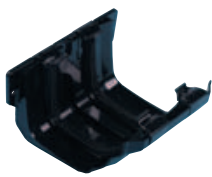
# Terrain Omega System

## Omega Rainwater Systems - 122mm

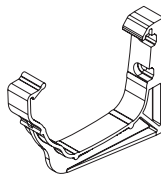
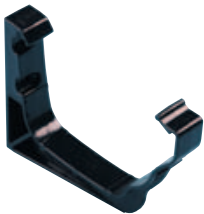
Omega



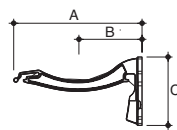
Size (mm)	A	B	T	Colour	Code
<b>OMEGA GUTTER</b> - Deep ogee profile. Standard gutter length 4m					
122	122	72	2.5	W R B	2550.5.40



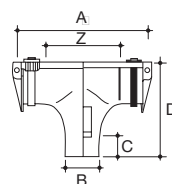
Size (mm)	A	Z	Colour	Code
<b>JOINT BRACKET</b> - For joining gutter lengths				
122	137	2.0	W R B	2551.5



Size (mm)	A	B	C	Colour	Code
<b>UNDERSLUNG SUPPORT BRACKET</b> - For supporting gutter lengths					
122	138	70	104	W R B	2552.5C
2552.5 is for use with Rafter brackets					
122	138	70	104	W R B	2552.5



Size (mm)	A	B	C	Colour	Code
<b>OVERSLUNG SUPPORT BRACKET</b> - Leaves front face of gutter uncluttered for improved appearance					
122	142	70	76	W R B	2552.5.150



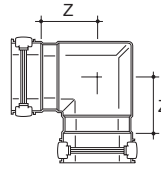
Size (mm)	A	B	C	D	Z	Colour	Code
<b>RUNNING OUTLET</b> - For connecting gutter run to 68mm or 62mm downpipe							
122	261	62	41	156	125	W R B	2553.5.25

## Omega Rainwater Systems - 122mm

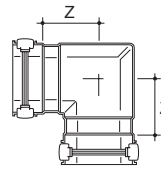
Omega



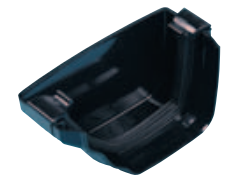
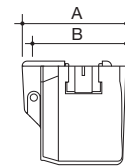
Size (mm)	Angle°	Z	Colour	Code
<b>INTERNAL GUTTER ANGLE</b> - To change gutter run direction: 90° and 135° as standard				
122	90	93	W R B	2554.5.90I
122	135	27	W R B	2554.5.135I



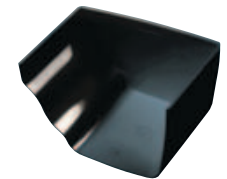
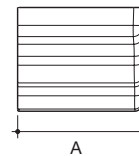
Size (mm)	Angle°	Z	Colour	Code
<b>EXTERNAL GUTTER ANGLE</b> - To change gutter run direction: 90° & 135° as standard				
122	90	67	W R B	2554.5.90E
122	135	23	W R B	2554.5.135E



Size (mm)	A	B	Colour	Code
<b>SHORT STOP-END (EXTERNAL)</b> - To cap open gutter end at external roofline boundaries. Left (L) and Right (R) hand versions are available				
122	83	75	W R B	2555.5L
122	83	75	W R B	2555.5R



Size (mm)	A	Colour	Code
<b>INTERNAL STOP-END</b> - To cap open fitting end and at internal roofline boundaries. Left (L) and Right (R) hand versions are available			
122	120	W R B	2556.5L
122	120	W R B	2556.5R



Size (mm)	A	B	C	D	Colour	Code
<b>STOP-END OUTLET</b> - To cap open gutter end and connect gutter to 68mm or 62mm downpipe. Left (L) and Right (R) hand versions are available						
122	120	62	41	156	W R B	2557.5.25L
122	120	62	41	156	W R B	2557.5.25R

