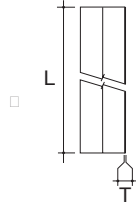
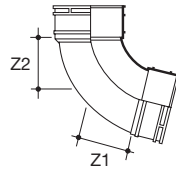


Terrain Rainwater Downpipe Systems

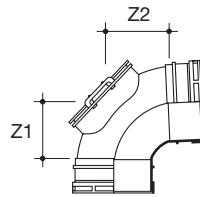
Rainwater Downpipe Systems - 110mm



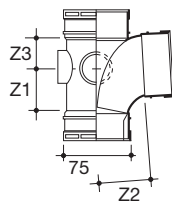
Size (mm)	L	T (min)	Colour	Code
110MM DOWNPIPE - Plain ended lengths				
110	3.0m	2.44	W B G	100.4.30
110	4.0m	2.44	W B G	100.4.40



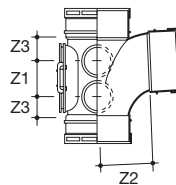
Size (mm)	L	Z1	Z2	Colour	Code
SWEPT BEND - To change pipe direction: 92½°, 112½° and 135° as standard					
110	92½	75	83	W B G	101.4.92
110	112½	65	63	W B G	101.4.112
110	135	30	30	W B G	101.4.135



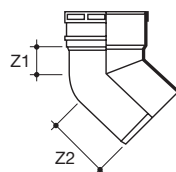
Size (mm)	Angle	Z1	Z2	Colour	Code
ACCESS BEND (DOUBLE SOCKET) - To allow pipe cleaning or inspection					
110	92½	102	98	W B G	103.4.92



Size (mm)	Angle	Z1	Z2	Z3	Colour	Code
BRANCH (ALL SOCKET) - To join branch pipe to same size vertical pipe at an angle 92½° and 135°						
110	92½	82	82	54	W B G	104.4.92
110	135	25	137	137	W B G	104.4.135




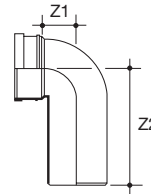
Size (mm)	Angle	Z1	Z2	Z3	Colour	Code
ACCESS BRANCH - To allow pipe cleaning or inspection at junction of two pipes						
110	92½	99	96	50	W B G	105.4.92




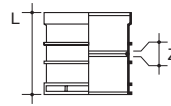
Size (mm)	Angle	Z1	Z2	Colour	Code
SPIGOT BEND - To change pipe direction in limited-space situation					
110	135	30	30	W B G	107.4.135


Rainwater Downpipe Systems - 110mm

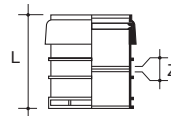
Size (mm)	Angle	Z1	Z2	Colour	Code
SPIGOT BEND (LONG TAIL) - To change pipe direction in limited-space situation					
110	92½	57	197	W B G	 107.4.92




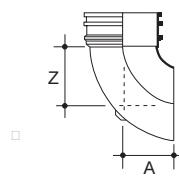
Size (mm)	L	Z	Colour	Code
STRAIGHT COUPLER - For joining pipe lengths				
110	102	3	W B G	 110.4



Size (mm)	L	Z	Colour	Code
EXPANSION COUPLER - To create expansion joint when joining pipe lengths in a solvent system				
110	123	3	W B G	 111.4

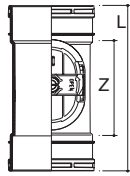


Size (mm)	A	Z	Colour	Code
SHOE - To terminate rainwater downpipe discharging over gully				
110	77	86	W B G	 2110.4

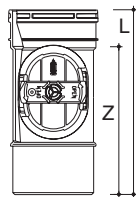


Terrain Rainwater Downpipe Systems

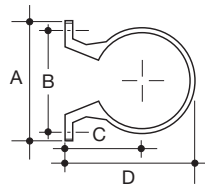
Rainwater Downpipe Systems - 110mm



Size (mm)	L	Z	Colour	Code
ACCESS PIPE - To allow pipe cleaning or inspection				
110	216	115	W B G	138.4



Size (mm)	L	Z	Colour	Code
ACCESS PIPE - To allow pipe cleaning or inspection				
110	216	166	W B G	139.4



Size (mm)	A	B	C	D	Colour	Code
ONE-PIECE DOWNPIPE BRACKET - To support pipe and fittings – stand-off distance (to back of pipe): 35mm						
110	146	124	91	151	W B G	143.4