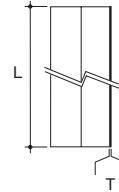


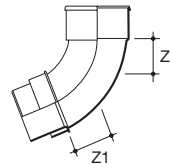
Terrain Rainwater Downpipe Systems

Rainwater Downpipe System - 68mm

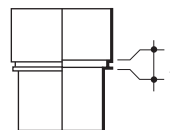
Size (mm)	L	T	Colour	Code
68MM DOWNPIPE - Plain ended lengths				
68	3.0m	1.8	W R B G	2100.25.30
68	4.0m	1.8	W R B G	2100.25.40
68	5.5m	1.8	W R B G	2100.25.55



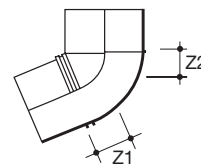
Size (mm)	Angle	Z1	Z2	Colour	Code
LONG RADIUS BEND - To change pipe direction: 112½° Prevents dislocation of swan neck					
68	112½	54	55	W R B	2101.25.112



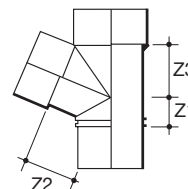
Size (mm)	Z	Colour	Code
STRAIGHT COUPLER - For joining pipe lengths. Fittings grooved to locate downpipe bracket			
68	8	W R G B	2107.25



Size (mm)	Angle	Z1	Z2	Colour	Code
SHORT BEND -To change pipe direction: 92½° and 112½° bends To construct 'swan necks', use two 112½° bends					
68	92½	44	32	W R G B	2108.25.92
68	112½	32	22	W R G B	2108.25.112

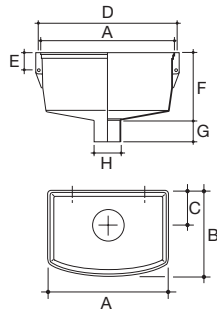
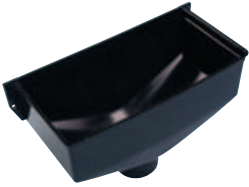


Size (mm)	Angle	Z1	Z2	Z3	Colour	Code
BRANCH -To join 68mm branch pipe to 68mm vertical pipe at an angle 90° and 112½°						
68	90	29	54	54	W R G B	2109.25.92
68	112½	29	54	54	W R G B	2109.25.112

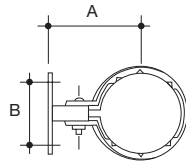


Terrain Rainwater Downpipe Systems

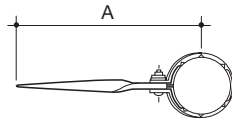
Rainwater Downpipe System - 68mm



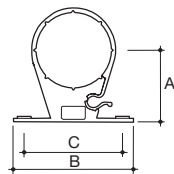
Size (mm)	A	B	C	D	E	F	G	H	Code
RAINWATER HEAD Colours: W R G B - To collect surface water at roof level where gutters are not possible									
68	250	140	66	273	38	179	44	64	2111.25



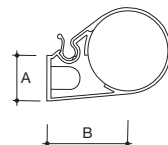
Size (mm)	A*	B	Colour	Code
PIPE AND FITTING BRACKET (ADJUSTABLE) - Allows up to 10mm stand-off adjustment. * A max = 73mm.				
68	63	51	W G B	2112.25.T



Size (mm)	A	Colour	Code
PIPE AND FITTING BRACKET (DRIVE-IN) - Minimum stand-off distance (to back of pipe): 52mm			
68	210	W B	2112.25.D




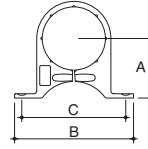
Size (mm)	A	B	C	Colour	Code
PIPE FITTING CLIP - Minimum stand-off distance (to back of pipe): 32mm					
68	66	90	110	W B	2113.25




Size (mm)	A	B	Colour	Code
CENTRAL FIXING CLIP - Minimum stand-off distance (to back of pipe): 32mm				
68	70	40	W R B G	2113.25C

Rainwater Downpipe System - 68mm

Size (mm)	A	B	C	Colour	Code
PIPE FITTING BRACKET - To secure downpipe to wall					
68	66	131	114	W R B G 	2116.25



Size (mm)	Z1	Z2	Colour	Code
ACCESS PIPE - To allow pipe cleaning or inspection				
68	76	51	W R B G 	2137.25

