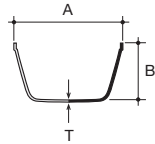
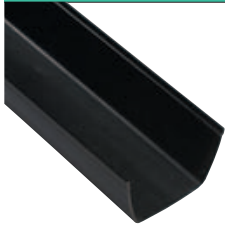




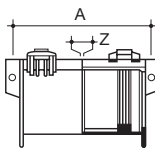
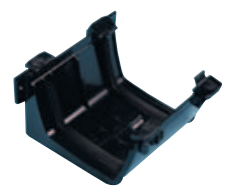
Terrain Streamline System


Streamline Rainwater Systems - 137mm

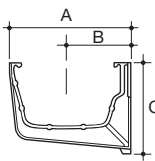
Streamline 




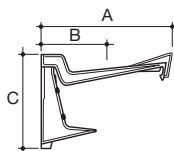
Size (mm)	A	B	T	Colour	Code
STREAMLINE GUTTER - High capacity rectilinear profile. Standard gutter length 4m					
 137	137	73	2.5	W R B	 2350.6.40




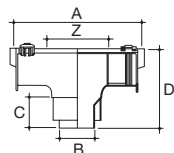
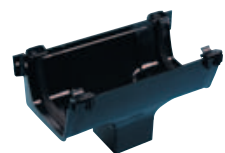
Size (mm)	A	Z	Colour	Code
JOINT BRACKET - For joining gutter lengths				
137	149	2	W R B	 2351.6.12




Size (mm)	A	B	C	Colour	Code
SUPPORT BRACKET - For supporting gutter lengths					
137	153	82	115	W R B	 2352.6




Size (mm)	A	B	C	Colour	Code
OVERSLUNG BRACKET - Leaves front face of gutter uncluttered for improved appearance					
137	162	82	114	W R B	 2352.150



Size (mm)	A	B	C	D	Z	Colour	Code
RUNNING OUTLET - For connecting gutter run to downpipe							
To 75mm square downpipe							
137	281	75	45	157	133	W R B	 2353.6.33


To 82mm round downpipe							
137	281	75	50	174	133	W R B	 2353.6.3

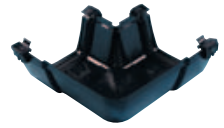
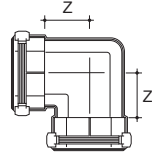
To 110mm round downpipe							
137	281	103	50	157	133	W R B	 2353.6.4




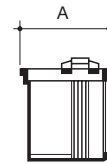
Streamline Rainwater Systems - 137mm


Streamline 

Size (mm)	Angle°	Z	Colour	Code
GUTTER ANGLE - To change gutter run direction: 90° and 135° as standard				
137	90	85	W R B	 2354.6.90
137	135	40	W R B	2354.6.135



Size (mm)	A	Colour	Code
SHORT STOP-END - To cap open gutter end			
137	71	W R B	 2355.6



Size (mm)	Dimensions	Colour	Code
STREAMLINE STOP END OUTLET LEFT HAND			
137	Fabricated	W R B	 2357.6.33WLH

Size (mm)	Dimensions	Colour	Code
STREAMLINE STOP END OUTLET RIGHT HAND			
137	Fabricated	W R B	 2357.6.33WRH



Size (mm)	A	B	C	D	Colour	Code
SCREWED OUTLET ADAPTOR - Spigot outlet to be set into gutter base Allows connection to 75mm square downpipe. *Use 75mm hole cutter						
75	68	45	70	75	W R B	2368.3

