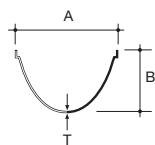
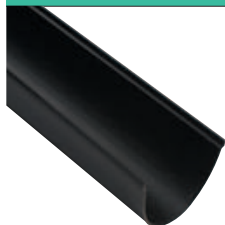


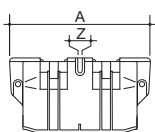
Terrain Rapidflow System

Rapidflow Rainwater Systems - 131mm

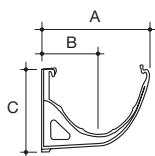
Rapidflow



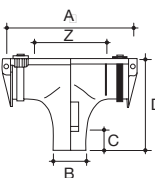
Size (mm)	A	B	T	Colour	Code
RAPIDFLOW GUTTER - Deep elliptical profile. Standard gutter length 4m					
131	131	82	2.5	W R B	2450.5.40



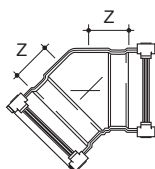
Size (mm)	A	Z	Colour	Code
JOINT BRACKET - For joining gutter lengths				
131	115	1.5	W R B	2451.5



Size (mm)	A	B	C	Colour	Code
SUPPORT BRACKET - For supporting gutter lengths, angles and stop-end outlets					
131	145	76	115	W R B	2452.5




Size (mm)	A	B	C	D	Z	Colour	Code
RUNNING OUTLET - For connecting gutter run to downpipe							
To 68mm round downpipe							
131	266	68	35	188	144	W R B	2453.5.25
To 82mm round downpipe							
131	266	82	45	188	144	W R B	2453.5.3

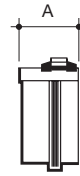




Size (mm)	Angle°	Z	Colour	Code
GUTTER ANGLE - To change gutter run direction: 90° and 135° as standard				
131	90	109	W R B	2454.5.90
131	135	63	W R B	2454.5.135

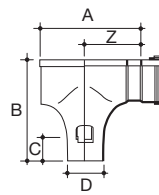
Rapidflow Rainwater Systems - 131mm

Rapidflow 

Size (mm)	A	Colour	Code
SHORT STOP-END - To cap open gutter end			
131	53	W R B	 2455.5



Size (mm)	A	B	C	D	Z	Colour	Code
STOP-END OUTLET - To cap open gutter end and connect gutter to 68mm round downpipe							
131	183	188	35	68	99	W R B	 2457.5.25
STOP-END OUTLET - To cap open gutter end and connect gutter to 82mm round downpipe							
131	183	188	35	68	99	W R B	 2457.5.3



Size (mm)	Colour	Code
ADAPTOR CLIP TO OTHER PVC-U GUTTERS - 2400 adaptor to all deepflow round systems		
131	Self coloured	2467

