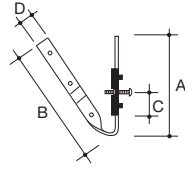


Rainwater Accessories

Rainwater Accessories



Size (mm)	A	B	C (min)	C (max)	D	Colour	Code
-----------	---	---	---------	---------	---	--------	------

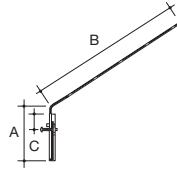
SIDE RAFTER BRACKET (ADJUSTABLE) - For connecting gutter support bracket and strap to side of open rafter end.

For 2100 Crescent and 2200 Corniche

91	157	13	53	19	Self		2160
----	-----	----	----	----	------	--	------

For 2300 Streamline, 2400 Rapidflow and 2500 Omega

115	155	13	110	19	Self		2360
-----	-----	----	-----	----	------	--	------



Size (mm)	A	B	C (min)	C (max)	Colour	Code
-----------	---	---	---------	---------	--------	------

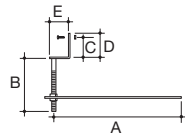
TOP RAFTER BRACKET (ADJUSTABLE) - For connecting gutter support bracket and strap to top edge of open rafter end.

For 2100 Crescent and 2200 Corniche

86	250	26	79	Self		2161
----	-----	----	----	------	--	------

For 2300 Streamline, 2400 Rapidflow and 2500 Omega

115	250	26	104	Self		2361
-----	-----	----	-----	------	--	------



Size (mm)	A	B	C	D	E	Colour	Code
-----------	---	---	---	---	---	--------	------

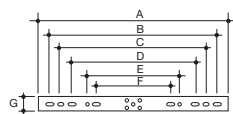
RISE AND FALL BRACKET (ADJUSTABLE) DRIVE IN BRACKET - To support gutter support bracket and strap where no fascia or rafters are available.

For 2100 Crescent and 2200 Corniche

260	130	50	62	43	Self		2162
-----	-----	----	----	----	------	--	------

For 2300 Streamline, 2400 Rapidflow and 2500 Omega

275	152	83	93	57	Self		2362
-----	-----	----	----	----	------	--	------




A	B	B	C	C	D	D	E	F	F	G	Code
(min)	(max)	(min)	(max)	(min)	(max)	(min)	(max)	(min)	(max)		


SUPPORT STRAP (ALL SYSTEMS) - Provides support for gutter fittings (running outlets and joint brackets) where fitting to rafters is required - Self Coloured

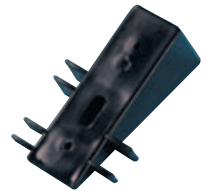
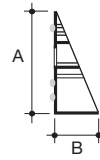
310	266	281	235	241	193	212	149	115	127	25		2265
-----	-----	-----	-----	-----	-----	-----	-----	-----	-----	----	--	------

Rainwater Accessories

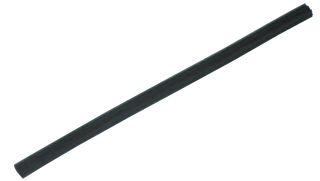
A	B	Colour	Code
SPACER BLOCK (STRAIGHT) - To increase stand-off distance of gutter support bracket. For 2100 Crescent and 2200 Corniche			
76	16	B 	2166



A	B	Colour	Code
SPACER BLOCK (TAPERED) - To compensate for 22 1/2° of sloping fascia. For 2100 Crescent and 2200 Corniche			
76	33	B 	2166.22



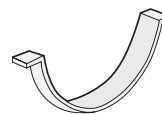
Colour	Code
GUTTER SEAL - Replacement seals for gutter fittings at connection points	
for 2100 Crescent	B 9911
for 2200 Corniche	B 9922
for 2300 Streamline and 2500 Omega	B 9933
for 2400 Rapidflow	B 9944



Size (mm)	Colour	Code
GUTTER OUTLET GUARD - For placement over outlet aperture to reduce risk of downpipe blockages by leaves, other debris etc. Suitable for 68mm round and 62mm square outlets		
122	B	9915.25

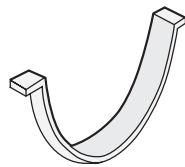


Size (mm)	Colour	Code
ADAPTOR TO OTHER PVC-U GUTTERS - 2150 adaptor to all round rainwater systems		
110	Self	2167

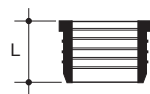


Rainwater Accessories

Rainwater Accessories



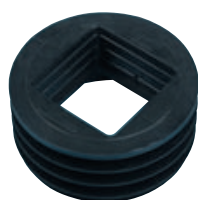
Size (mm)	Colour	Code
ADAPTOR CLIP TO OTHER PVC-U GUTTERS - 2450 adaptor to all deepflow round systems		
131	Self	2467



Size (mm)	L	Colour	Code
ADAPTOR TO UNDERGROUND DRAIN - For connecting 68mm downpipe to 82mm underground drain.			
68/82	54	B	3DW25



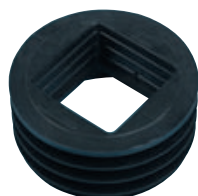
Size (mm)	L	A	Colour	Code
ADAPTOR TO UNDERGROUND DRAIN - For connecting 68mm downpipe to 110mm underground drain				
68/110	54	10	B	4DW25



Size (mm)	L	Colour	Code
ADAPTOR TO UNDERGROUND DRAIN - Connects 62mm or 75mm downpipe to 110mm underground drain.			
62/110	54	B	4DW23




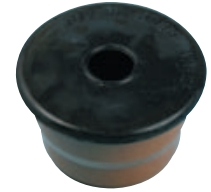
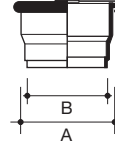
Size (mm)	L	Colour	Code
ADAPTOR TO UNDERGROUND DRAIN - Connects 82mm downpipe to 110mm underground drain			
82/110	54	B	4DW3



Size (mm)	L	Colour	Code
PIPE ADAPTOR 4" X 3" / 75MM SQ			
75/110	54	B	4DW33

Rainwater Accessories

Size (mm)	A	B	Colour	Code
UNIVERSAL RAINWATER ADAPTOR - Connects 68mm or 62mm square downpipe to 110mm underground drain. Fits both pipe end and socket. Not for connection to foul drainage				
68/110	110	102	B	 4D76



Size (ml)	Description	Code
LIQUID WELD -		
125ml	Liquid Weld Tin Bs6209	9100.125
250ml	Liquid Weld Tin Bs6209	9100.250
500ml	Liquid Weld Tin Bs6209	9100.500



Size (ml)	Description	Code
SOLVENT CLEANING FLUID -		
125ml	Solvent Cleaning Fluid	9101.125
250ml	Solvent Cleaning Fluid	9101.250



Size (ml)	Description	Code
LUBRICANT - For lubricating seal rings on expansion fittings		
250ml	Terrain Silicone Lubricant	9136.250
500ml	Terrain Soluble Lubricant	9136.500

