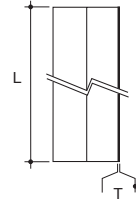
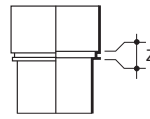


Rainwater Downpipe Systems - 62mm

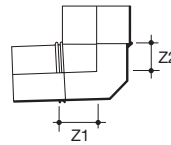
Size (mm)	L	T(min)	Colour	Code
DOWNPIPE - Plain ended lengths				
62	3.0m	1.8	W R B G	2200.23.30
62	4.0m	1.8	W R B G	2200.23.40
62	5.5m	1.8	W R B G	2200.23.55



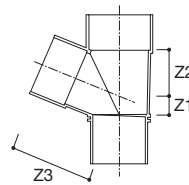
Size (mm)	Z	Colour	Code
STRAIGHT CONNECTOR - For joining pipe lengths			
62	6	W R B G	2207.23



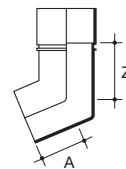
Size (mm)	Angle	Z1	Z2	Colour	Code
BEND - To change pipe direction: 92½° and 112½° bends as standard To construct 'swan necks', use two 112½° bends					
62	92½	30	40	W R B G	2208.23.92
62	112½	24	32	W R B G	2208.23.112



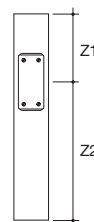
Size (mm)	Angle	Z1	Z2	Z3	Colour	Code
BRANCH - To join 62mm branch pipe to 62mm vertical pipe at an angle 112½°						
62	112½	20	49	87	W R B G	2209.23.112



Size (mm)	A	Z	Colour	Code
SHOE - To terminate rainwater downpipe discharging over gully				
62	51	64	W R B G	2210.23

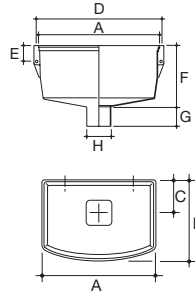


Size (mm)	Z1	Z2	Colour	Code
ACCESS PIPE - To allow pipe cleaning or inspection				
62	150	300	W R B	2237.23

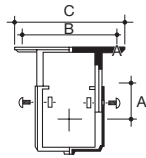


Terrain Rainwater Downpipe Systems

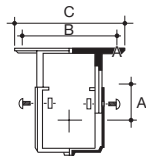
Rainwater Downpipe Systems - 62mm



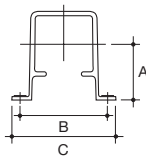
Size (mm)	A	B	C	D	E	F	G	H	Code
RAINWATER HEAD - To collect surface water at roof level where gutters are not possible. Available colours W R B G									
62	274	128	44	295	38	179	44	58	2211.23



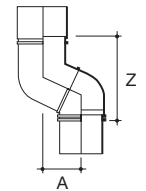
Size (mm)	A*	B	C	Colour	Code
PIPE AND FITTING BRACKET (ADJUSTABLE) - Allows up to 32mm stand-off adjustment. *A max = 70mm					
62	42	102	126	W R B G	2212.23



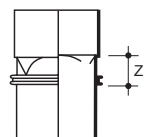
Size (mm)	A	B	C	Colour	Code
PIPE AND FITTING BRACKET (ADJUSTABLE) - Allows up to 32mm stand-off adjustment					
62	44	111	127	W R B G	2213.23



Size (mm)	A	B	C	Colour	Code
LONG STAND-OFF DOWNPIPE BRACKET - Allows up to 32mm stand-off adjustment					
62	62	93	109	W R B G	2216.23



Size (mm)	A	Z	Colour	Code
WALL OFFSET - To allow downpipe to accommodate wall plinth or other obstruction up to 57mm				
110	57	22	W R B G	2214.23



Size (mm)	Z	Colour	Code
ADAPTOR (SQUARE TO ROUND) - For connecting 62mm square to 68mm round down pipe			
62/68	24	W R B G	2215.23.25