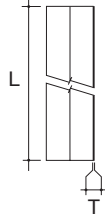
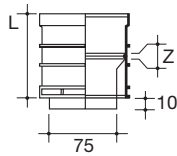


Terrain Rainwater Downpipe Systems

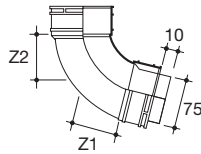
Rainwater Downpipe Systems - 82mm



Size (mm)	L	Z	Colour	Code
82MM DOWNPIPE - Plain ended lengths				
82	4.0m	2	W R B	2100.3.40

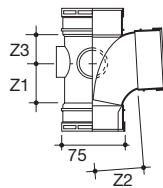


Size (mm)	L	T (min)	Colour	Code
STRAIGHT COUPLER (DOUBLE SOCKET) - For joining pipe lengths				
82	92	3	W R B	2107.3



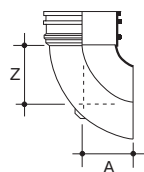
Size (mm)	Angle	Z1	Z2	Colour	Code
SWEPT BEND - To change pipe direction: 92½°, 112½° and 135° as standard To construct 'swan necks', use two 112½° bends					
82	92½	70	72	W R B	2101.3.92
82	112½	43	75	W R B	2101.3.112†
82	135	16	22	W R B	2101.3.135

† Fabricated



Size (mm)	Angle	Z1	Z2	Z3	Colour	Code
BRANCH (ALL SOCKET) - To join branch pipe to same size vertical pipe at an angle 92½°, 112½° and 135°						
82	92½	70	83	35	W R B	2109.3.92
82	112½	71	83	35	W R B	2109.3.112†

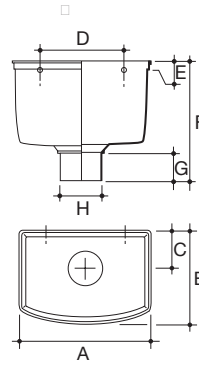
† Fabricated



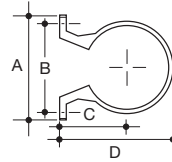
Size (mm)	A	Z	Colour	Code
SHOE - To terminate rainwater downpipe discharging over gully				
82	64	86	W R B	2110.3

Rainwater Downpipe Systems - 82mm

Size (mm)	A	B	C	D	E	F	G	H	Code
RAINWATER HEAD Colours: W R G B - To collect surface water at roof level where gutters are not possible									
82	254	180	75	153	15	222	51	75	2111.3



Size (mm)	A	B	C	D	Colour	Code
ONE-PIECE DOWNPIPE BRACKET - To support pipe and fittings – stand-off distance (to back of pipe): 35mm						
82	132	110	76	117	W R B	143.3



Size (mm)	A	B	Z	Colour	Code
ACCESS PIPE - To allow pipe cleaning or inspection					
82	41	39	120	W R B	2137.3

