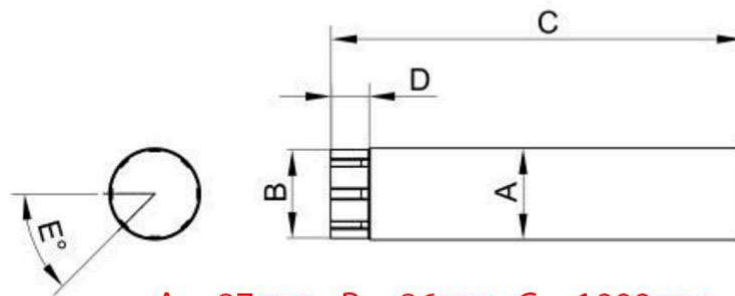




## 1 metre Long, 87mm Plain Galvanised Intermediate Steel Downpipe



A = 87mm B = 86mm C = 1000mm  
D = 50mm E = 45 degree

1m long, 87mm Plain Galvanised Steel Intermediate Downpipe Pipe

- Manufactured with Roofart's double stiffening technology for better rigidity and strength
- Used to make up longer runs of downpipe or between two bends as a swan-neck
- Male end of pipe fits inside plain end of pipe or shoe.