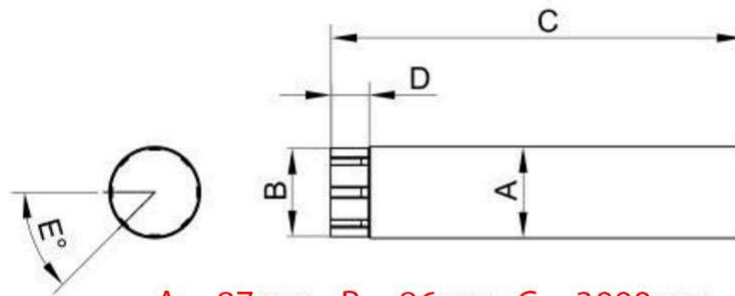




## 3 metre Long, 87mm Plain Galvanised Steel Downpipe



A = 87mm B = 86mm C = 3000mm  
D = 50mm E = 45 degree

87mm Plain Galvanised Steel Downpipe Pipe for taking water flow from gutter to drainage

- Manufactured with Roofart's double stiffening technology for better rigidity and strength
- Socketed one end only to allow for connection to other downpipe, no connectors required on a socketed to plain end
- 87mm diameter pipe is compatible with other steel downpipes of the same size, please ask for more info
- Can be connected into drainage gully or to a downpipe shoe at the bottom of pipe.
- 1m long intermediate pipes also available to extend longer runs of downpipe or to be used to create swan-neck.