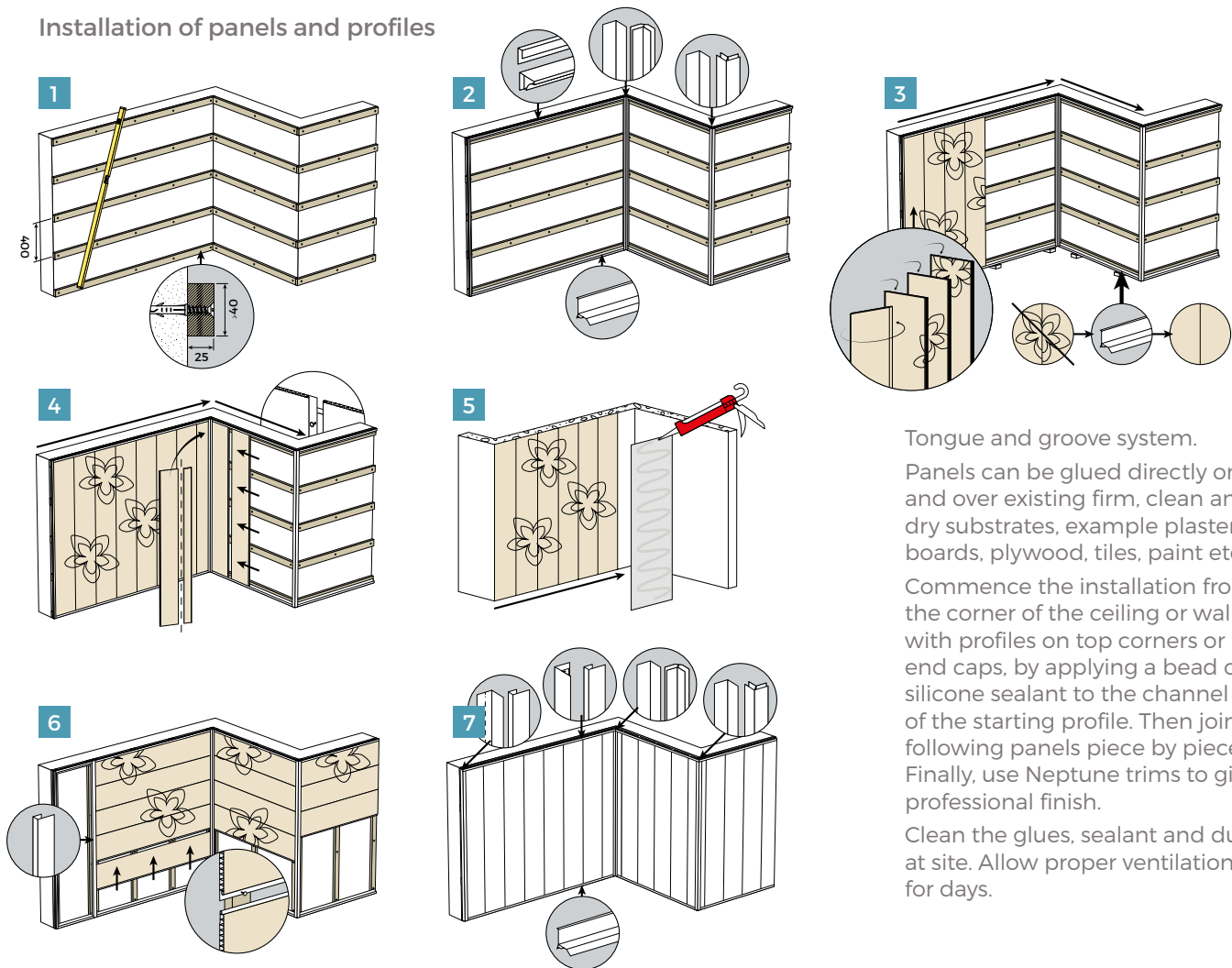


Installation & Maintenance

Installation of panels and profiles



Tongue and groove system.

Panels can be glued directly onto and over existing firm, clean and dry substrates, example plaster boards, plywood, tiles, paint etc.

Commence the installation from the corner of the ceiling or wall with profiles on top corners or end caps, by applying a bead of silicone sealant to the channel of the starting profile. Then joint following panels piece by piece. Finally, use Neptune trims to give a professional finish.

Clean the glues, sealant and dust at site. Allow proper ventilation for days.

Pre-installation Procedures

All panels must be checked for any quality problem prior to the installation.

- a. Please check the batch number on the outer packaging and on the back of each panel. Open each package and check whether for any colour variation between different batches.
- b. Interior panels only. Must not be stored and exposed to direct sunlight
- c. If installing using adhesive, please use Guardian PVC Panel Adhesive.

- d. Profiles as required, such as edge trim, internal corner, external corner and wall celling cove, etc.

Tools you may need:

1. Tape measure
2. Fine tooth saw or knife
3. Silicone sealant and special glue for PVC panel
4. Panel adhesive

If there are any concerns prior to installation, please stop the installation and contact the supplier of your Neptune Panels with your concerns.

Care and maintenance

- a. Neptune Panels are for interior use. Please avoid heating by direct sunlight and high temperatures in excess of 60°C. Damage may occur to the surface and invalidate the warranty.
- b. The panels should be wiped using a mild household detergent with a soft cloth or sponge. Solvents or aggressive cleaning agents are to be avoided.