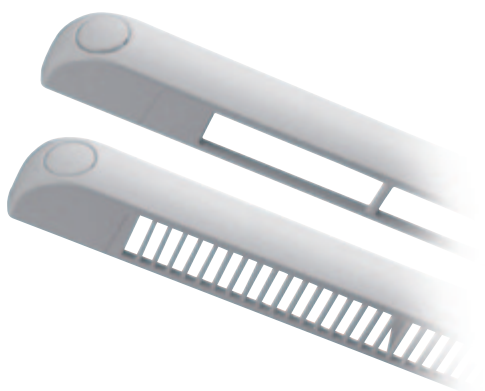


F Vent

Slotvent

Physical specification

All measurements in millimetres



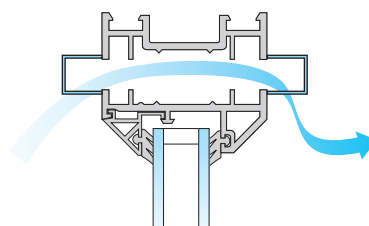
Features and benefits

Slimline, unobtrusive finish on profile when installed.

Up to 2634mm² equivalent area.

Clip fit and screw fix installation options.

10 or 12mm rout options.



Models and control options

Product Code	Equivalent area (mm ²)	Dimensions (mm) l x h x d	Slot height (mm)	Slot size (mm)			Control	Colour
				Length	Central gap	Length		
1250FB	1342	238 x 16.5 x 23	10	192			B	W, BW, B, T, WIBO, WITO
	1362		12	194				
2500FB	2583	383 x 16.5 x 23	10	163.5	10	163.5	B	W, BW, B, T, WIBO, WITO
	2634		12	164.5	10	164.5		

Scottish Building Regulations: Free Area Performance (see page 11 for full details), 1250FB = 2000mm², 2500FB = 4000mm² (using 12mm rout option). **Control:** Bottom (B). **Colour:** White (W), Brown (B), Tan (T), Brilliant White (BW), White Inner Brown Outer (WIBO), White Inner Tan Outer (WITO).

Performance

BS EN 1026: 2000 Air Permeability

Window vent	@ 50Pa (m ³ /hr)	@ 50Pa (l/s)
1250FB	0.53	0.10
2500FB	0.36	0.14

BS EN 1027: 2000 Watertightness

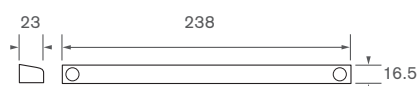
Window vent	Pressure @ no leakage (Pa)	Classification
1250FB	750	E750
2500FB	600	8A

BS EN ISO 717-1: 1997 Airborne Sound Insulation (dB)

Window vent	Dn,e,w (dB) Open
1250FB	37
2500FB	33

Clip Fit

The F Vent is available with a clip fit installation option which offers valuable installation time savings in production and onsite. The clip has been designed to fit securely to a range of profile depths and is provided already installed in the ventilator body.



1250FB



2500FB

Ordering information

To Order: 2500FB + colour option e.g. W (white), if you require clip fit add a 'C' as follows: 2500FBCW